

# "(A Prisoner of This) Hopeless Love"

C. Stamey

ShangMoto Songs BMI

♩ = 96

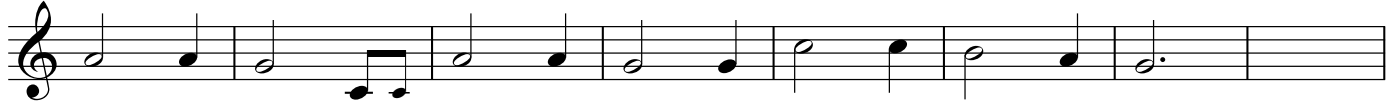


F C F C Am G F F



I'm a pris-ner of this hope-less love, that will not go a - way  
 Once I lived on a moun-taintop, where I could see for miles  
 If you find a love that's true, keep her in your heart

F C F C Am D<sup>6</sup> G G



<sup>9</sup> pris - 'ner of this hope - less love that haunts me night and day  
 Now I'm in a val - ley deep, where no one e - ver smiles  
 Jea - lou - sy and a wan - d'ring eye will tear your love a - part

Am Am Em Em Dm Dm G<sup>7</sup> G<sup>7</sup>



<sup>17</sup> I was once so care-free, but now here I stay a  
 I wake up each mor-ning, just to wait for night to fall a  
 Will you lis - ten to me, and hear what I've be-come?: Just a

F/C C F/C C Dm G<sup>7</sup> C C

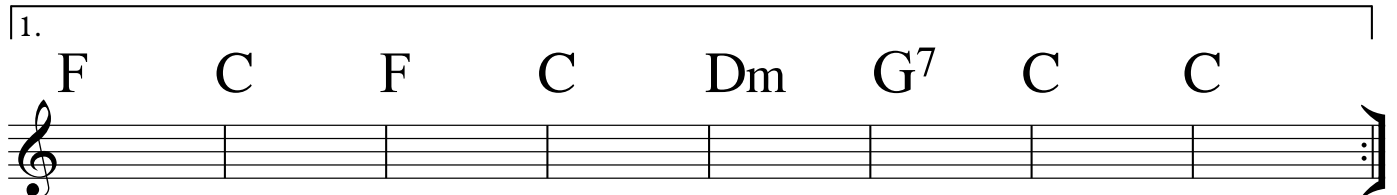


<sup>25</sup> pris - 'ner of this hope - less love, un - til my dy - ing day ---  
 pris - 'ner of this hope - less love, that I ne - ver shall re - solve ---  
 pris - 'ner of this hope - less love, un - til my day is done just a

**2x, D.S.**

**for solo verse, then 3rd Verse & Tag**

TURNAROUND TRANSITION, after V1 only



33

TAG

F/C C F/C C Dm G<sup>7</sup> C C <sup>rit.</sup> F FC



<sup>41</sup> pris - 'ner of this hope - less love, a - fraid to face the sun  
*plagal "church" ending*